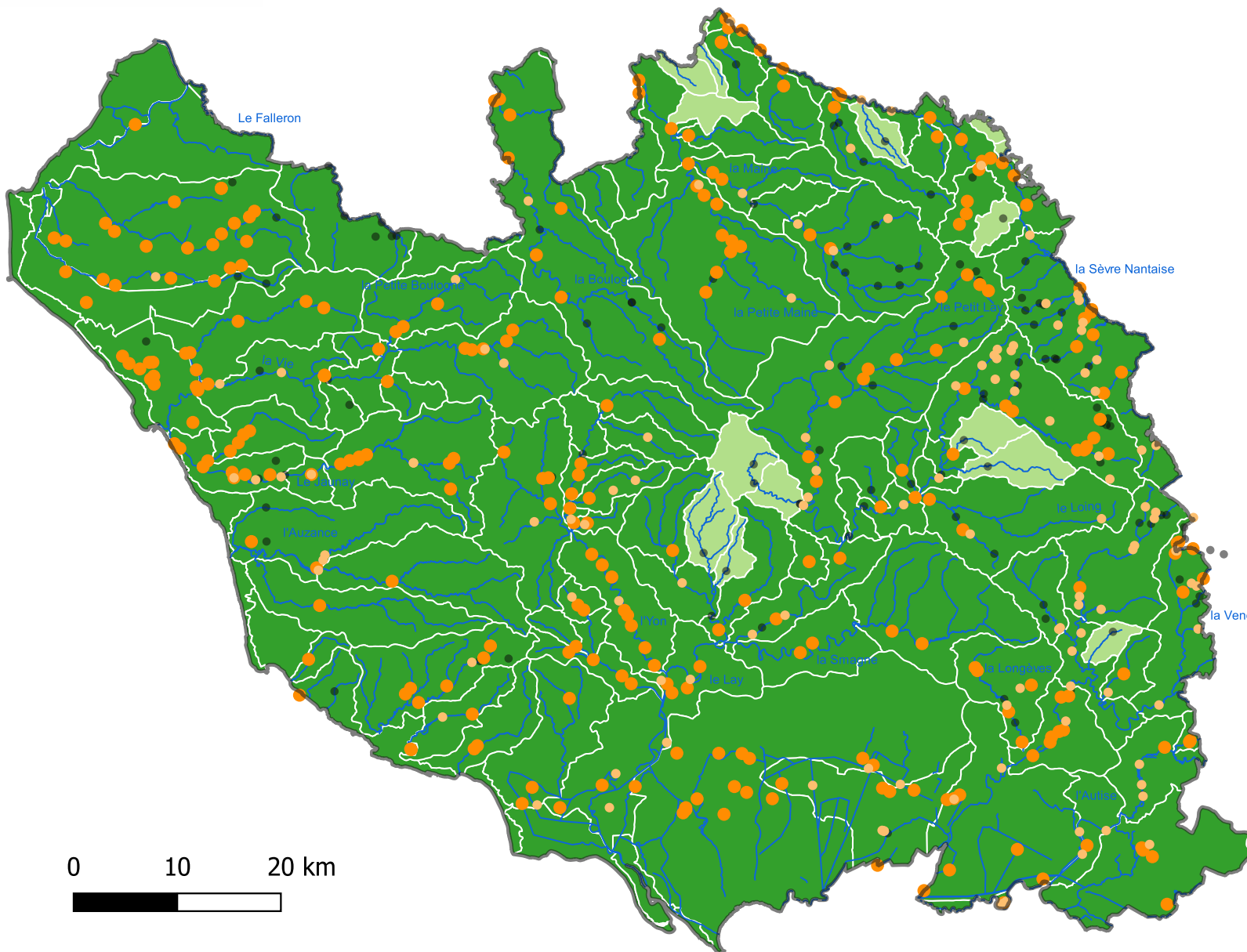






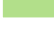



# Répartition spatiale de l'anguille - ANG (*Anguilla anguilla*) à l'échelle des masses d'eau du département de la Vendée - 2022



-  limite département
- Anguille - ANG**
-  Points d'observation ANG avant 2010
-  Points d'observation ANG après 2010
-  Autres points d'observations
-  Cours d'eau
-  Présence certaine
-  Présence probable
-  Absence probable ou certaine

0 10 20 km

Sources : BD CarTHAgE®  
Données : Base de données piscicoles du Département de la Vendée

Auteurs :  
FVPPMA 85  
Guillaume BOUAS  
Dimitri BOURON  
2022